



## Visualizer v2.2 Installation Guide

# Visualizer v2.2 Installation Guide

Rev e02



**Visualizer™ is a decision support system for analysis of data originating from ChromoQuant™ QF-PCR kit.**

*ChromoQuant* and *Visualizer* are registered trademarks of CyberGene AB, Stockholm, Sweden

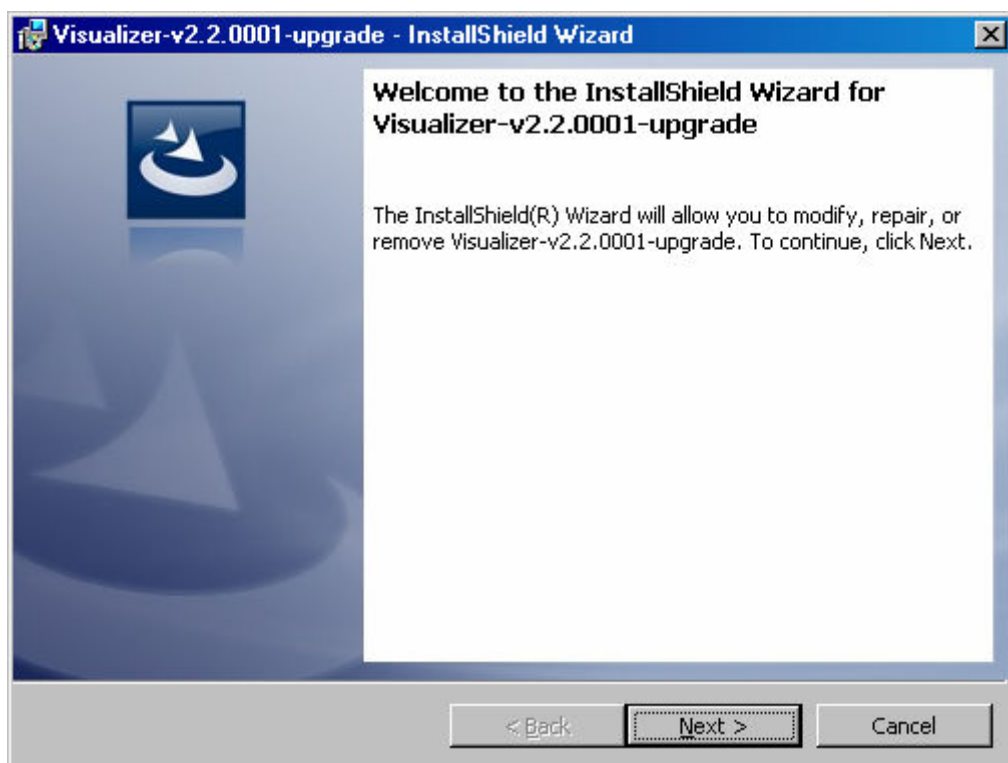


### 1 Before installation

If you already have installed Visualizer v2.2 on your computer – such as an earlier release or beta-version – then we recommend that you first remove the installation. You can do this from the *controlpanel* by selecting *add/remove programs*. Make sure to remove MySQL as well. Contact you local system administrator for guidance in this process.

### 2 Installing Visualizer

Visualizer's installation wizard will install Visualizer and all other components needed to run Visualizer. Start the *setup.exe* installation program and follow the instructions.



**Fig:** Visualizer's install wizard. Click Next to proceed. Accept licence condition and all default settings. The Wizard installs Visualizer and all its components.

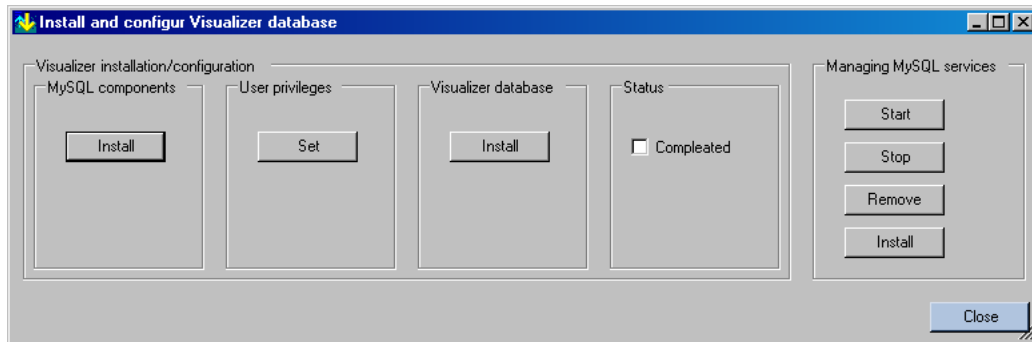
The installation will place Visualizer in your *Programs* directory. A directory structure is also created that contains Visualizer's working data and must not be altered.

After completing the installation Visualizer will be added to your Program menu and as a desktop icon. The first time Visualizer is started you will be directed to a configuration dialogue.



CYBERGENE AB

## Visualizer v2.2 Installation Guide



**Fig:** Visualizer’s configuration window that is opened the first time you start Visualizer.

The configuration dialogue has three buttons in the “Visualizer installation/configuration” grouping. These buttons activates the following steps that completes the installation:

1. Install MySQL components<sup>1</sup>
2. Set user privileges
3. Install Visualizer’s database
4. Indicate that Visualizer is configured by *checking* the checkbox

It is important that these actions are taken in the specified order.

The rightmost “Managing MySQL services” grouping is used when managing MySQL. Normally this will never be necessary. However, if needed please refer to the troubleshooting section in this manual.

### 2.1 Install MySQL Components

Click the *Install* button in the MySQL components section. This will initiate installation of three different components:

1. MySQL database server
2. MySQL Connector
3. MySQL Control Centre

Follow the instruction for each installation wizard. The three installations are described stepwise in the following three sections. It is important that MySQL is installed in its default directory `c:\mysql`

You must also note down the installation directory of MySQL Control Center since the installation directory may vary between different systems. Normally the installation is done in “`c:\Program\mysqlcc`” but in some cases the wizard suggests “`c:\Program files\mysqlcc`”. In both cases accept the wizard suggestion but make not down your selection since it will be needed later on.

---

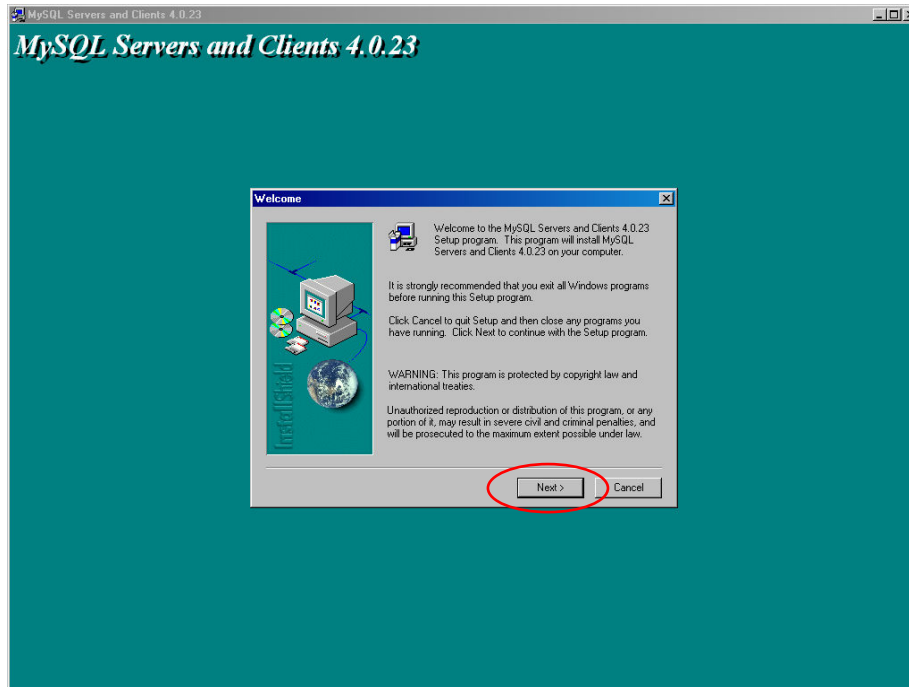
<sup>1</sup> This step will also start MySQL services



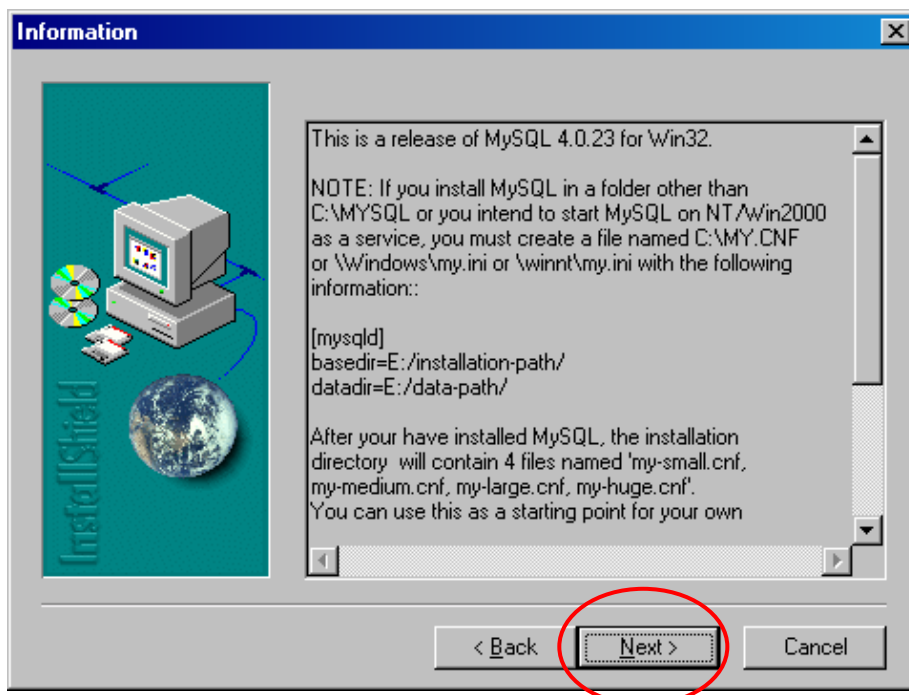
## Visualizer v2.2 Installation Guide

### 2.1.1 Installing MySQL database

The following screen images displays the installation procedure and which selections that need to be made. In all cases accept default settings. All default settings in Visualizer assumes that MySQL is installed with default settings.

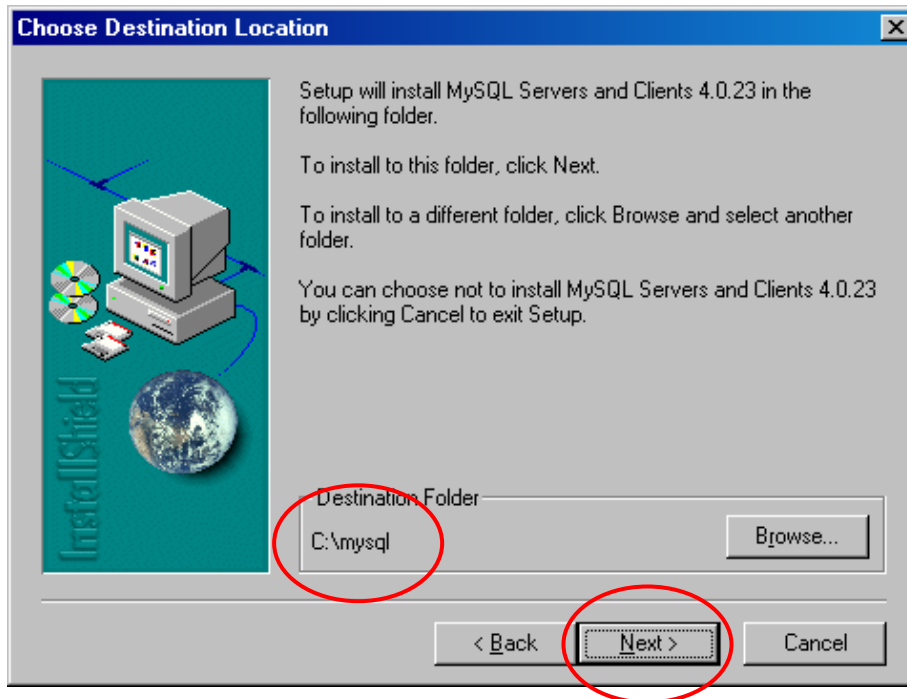


When the installation wizard starts, just click *Next* to proceed.

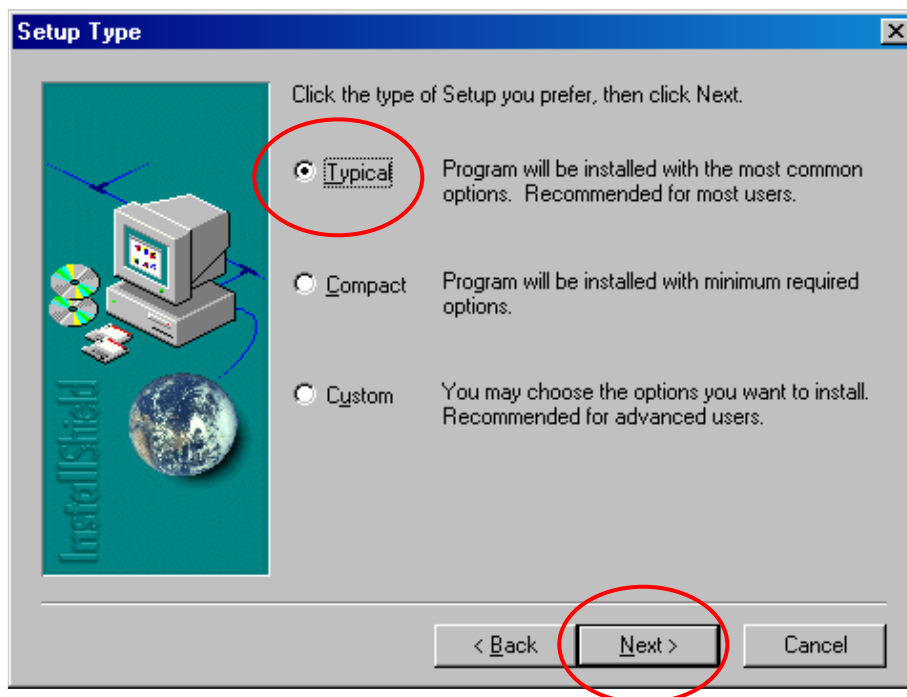


The next step informs about the installation, click *Next* to proceed.

## Visualizer v2.2 Installation Guide



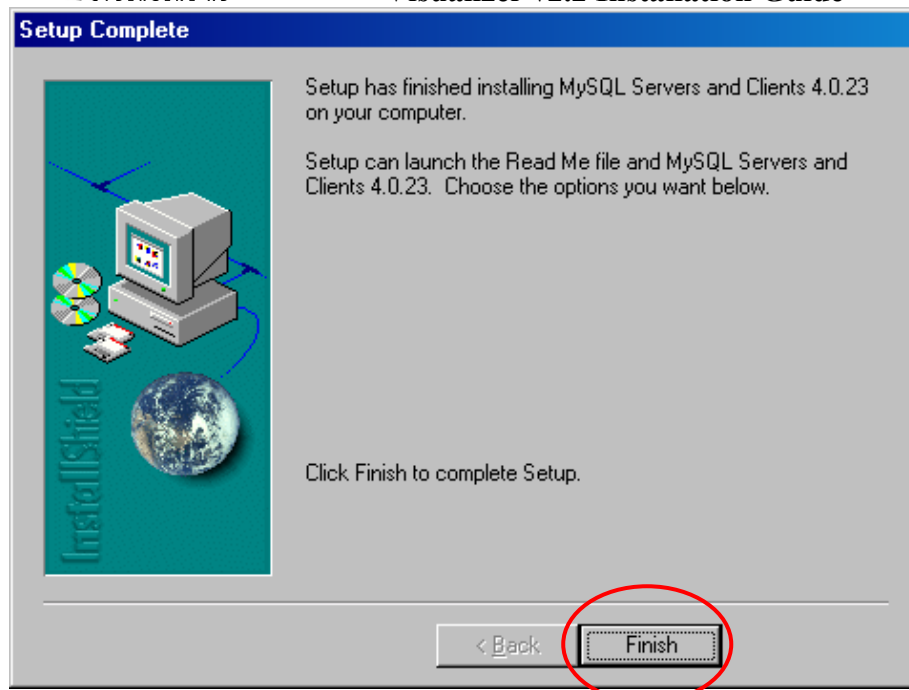
This screen informs about installation folder for MySQL. Accept this setting and just click *Next* to proceed.



Select *Typical* for type of Setup and thereafter click *Next* to proceed.



## Visualizer v2.2 Installation Guide



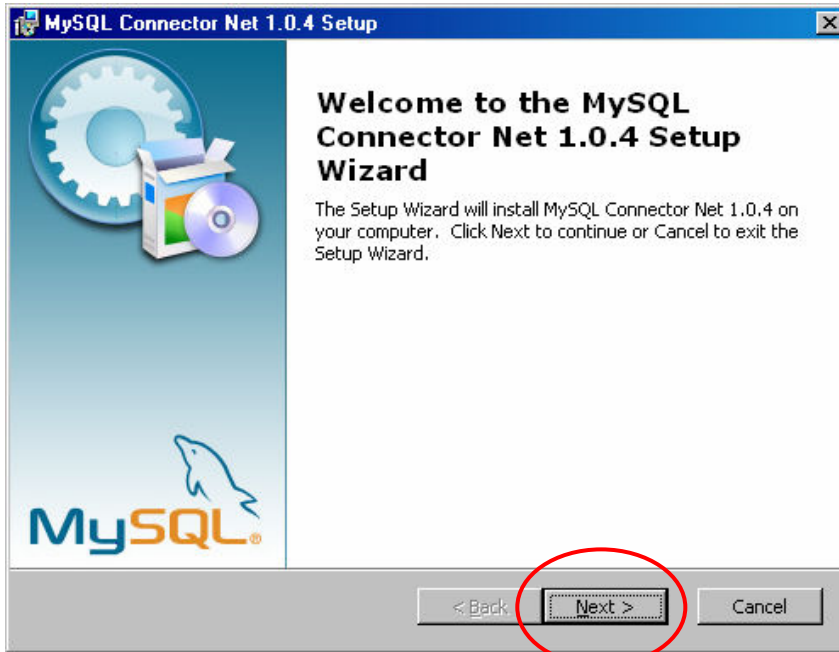
Complete the installation of MySQL by clicking *Finish*.



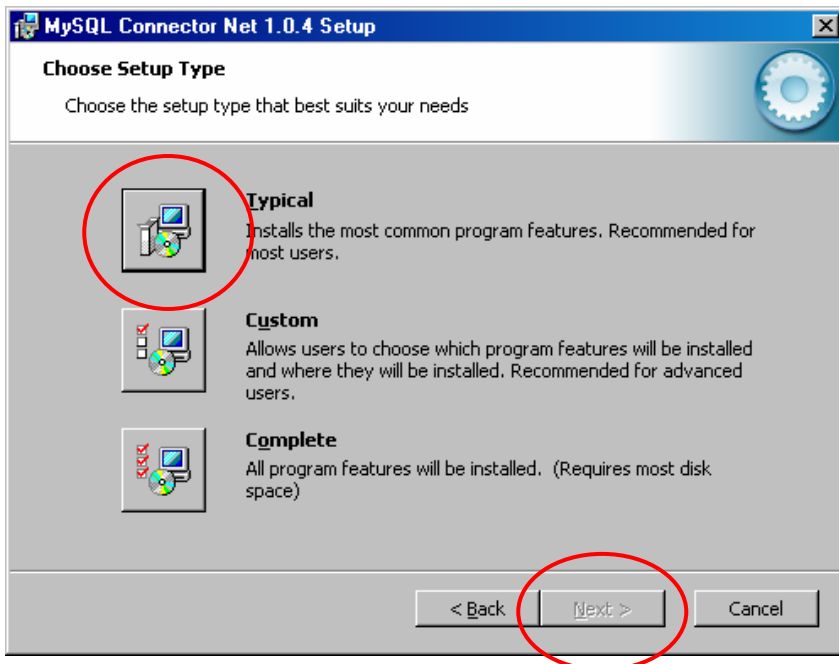
## Visualizer v2.2 Installation Guide

### 2.1.2 Installing MySQL connector

The following screen images displays the installation procedure and which selections that need to be made. In all cases accept default settings.



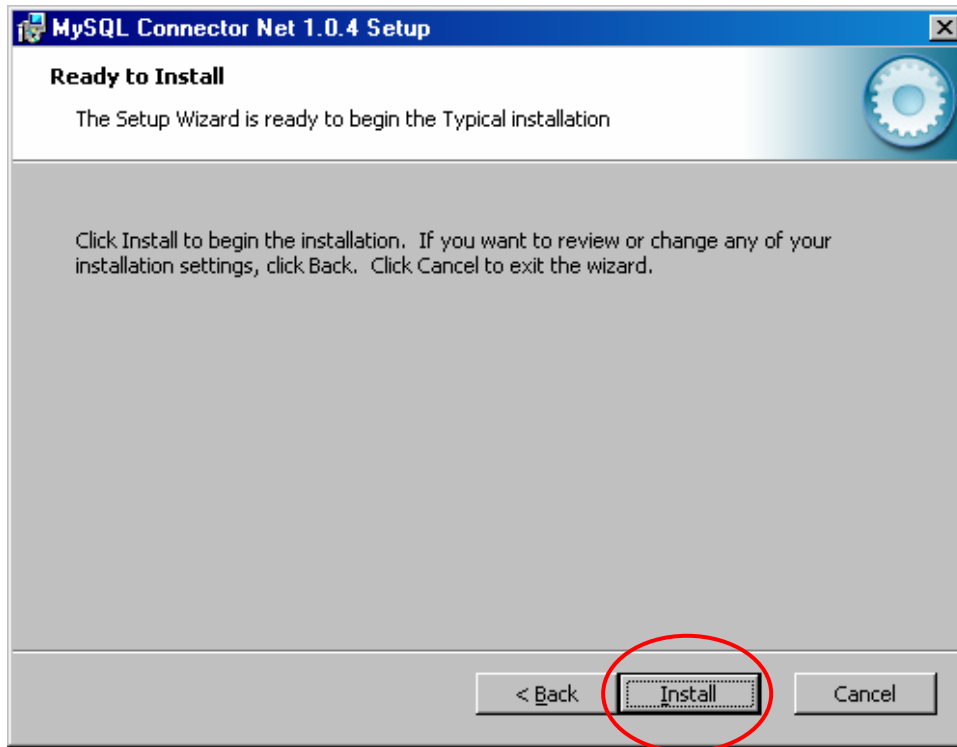
When the installation wizard starts just click *Next* to proceed.



Select *Typical* as Setup type. Selecting setup type activates the *Next* button, click to proceed



## Visualizer v2.2 Installation Guide



Complete the installation by clicking on the *Install* button.



After the installation has succeeded you will be asked to click the *Finish* button to close the wizard.



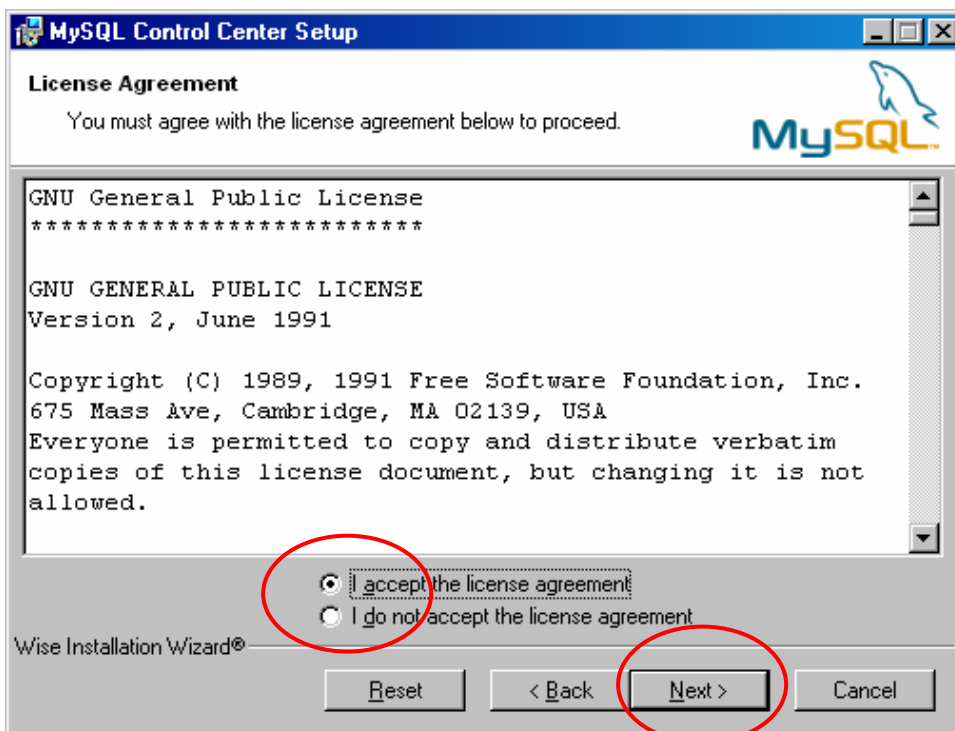
## Visualizer v2.2 Installation Guide

### 2.1.3 Installing MySQL Control Center

The following screen images displays the installation procedure and which selections that need to be made. In all cases accept default settings.



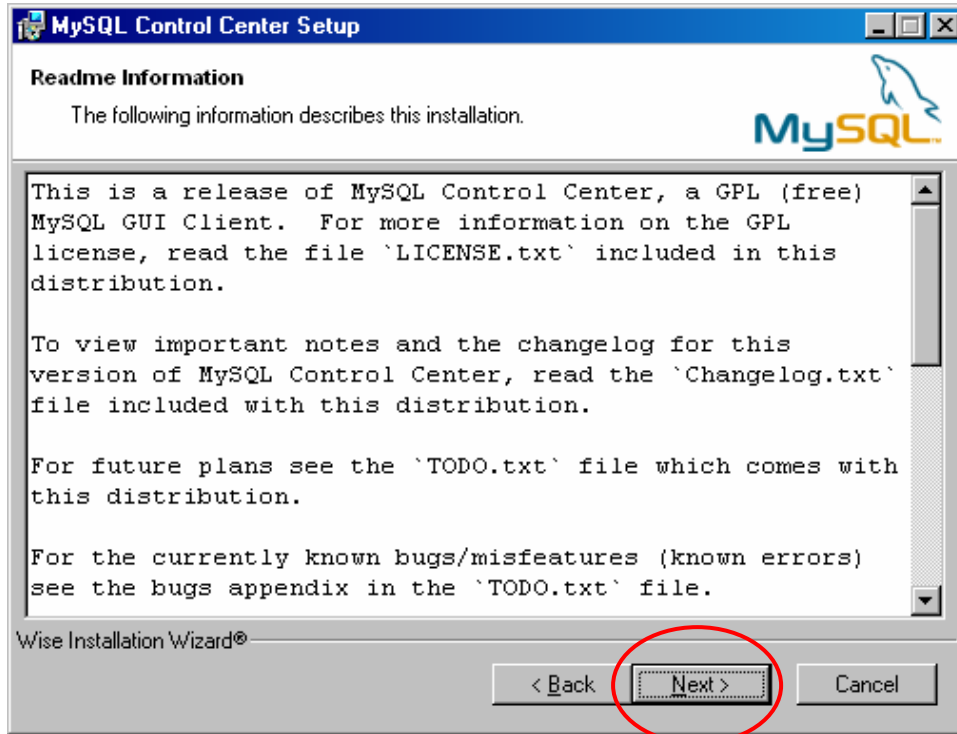
When the installation wizard start you will be asked click *Next* to proceed.



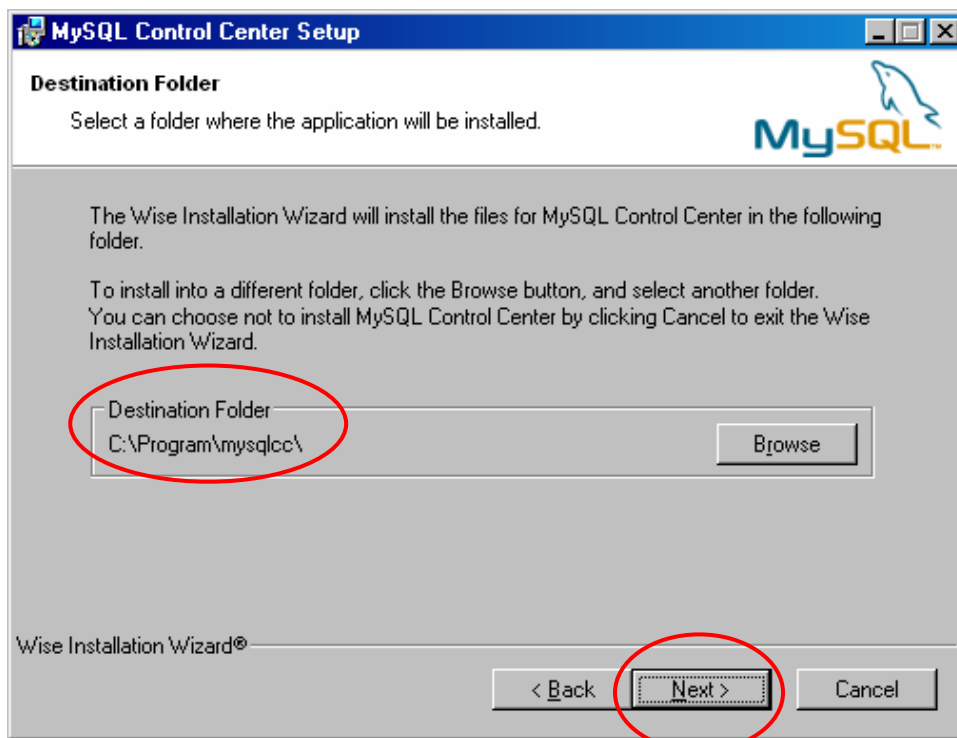


## Visualizer v2.2 Installation Guide

Accept the license agreement and thereafter click *Next* to proceed with the installation.



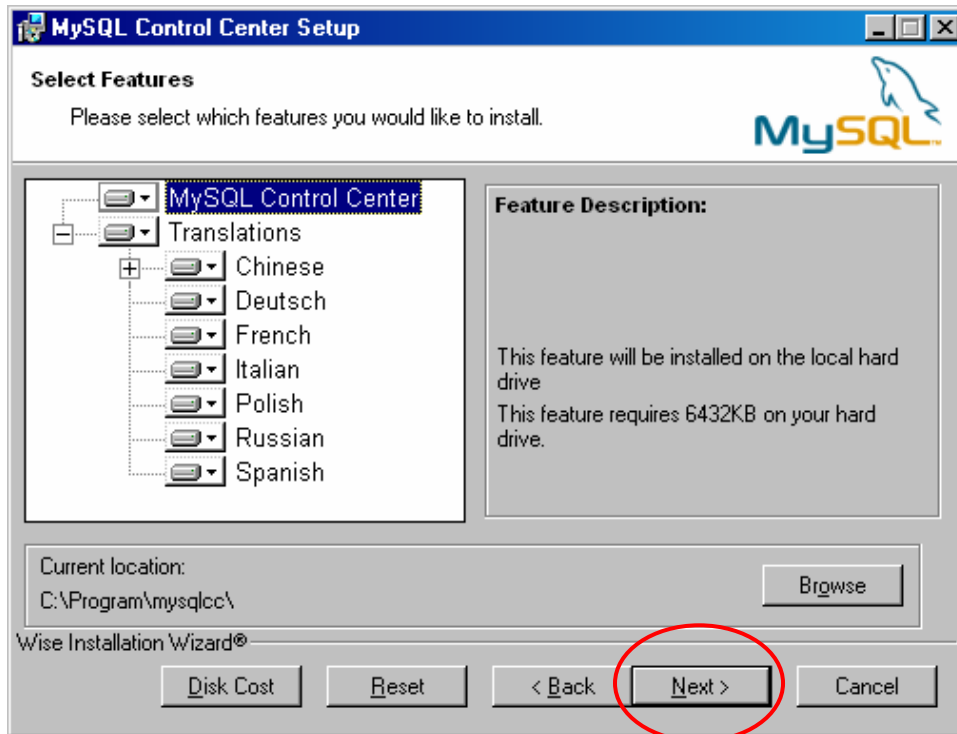
Thereafter you will be given some general information about the installation. Just click *Next* to proceed.



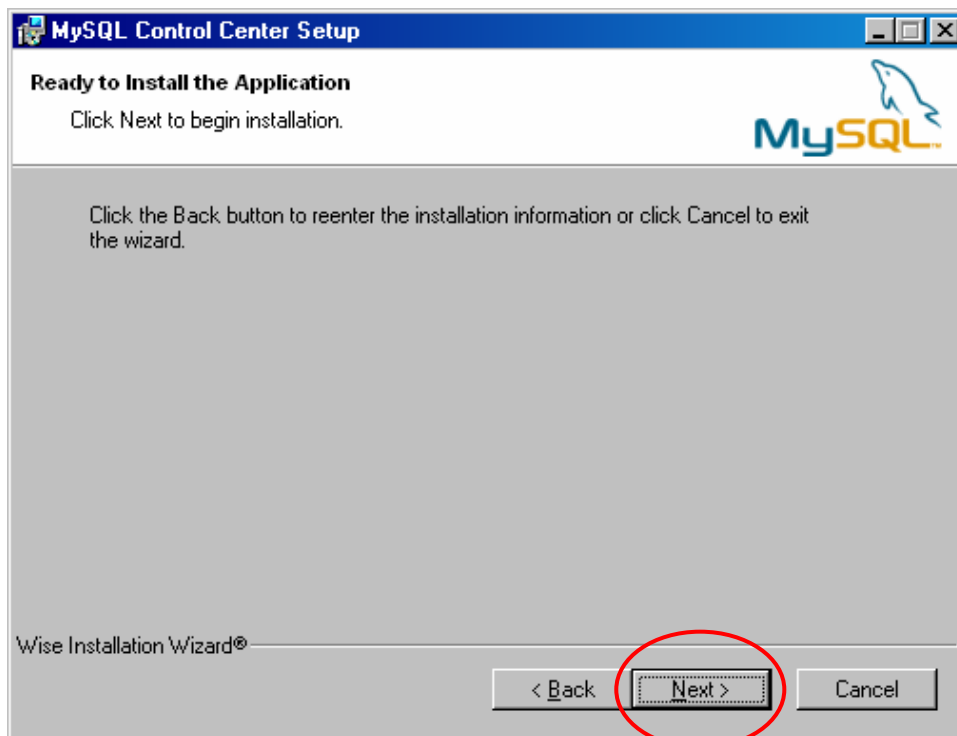


## Visualizer v2.2 Installation Guide

Accept the default setting for installation folder. Don't forget to note which directory you accepted. Just click *Next* to proceed.



Just accept the default features and the location. Just click *Next* to proceed.



The installation will now be completed. Click *Next* to complete the installation.



## Visualizer v2.2 Installation Guide



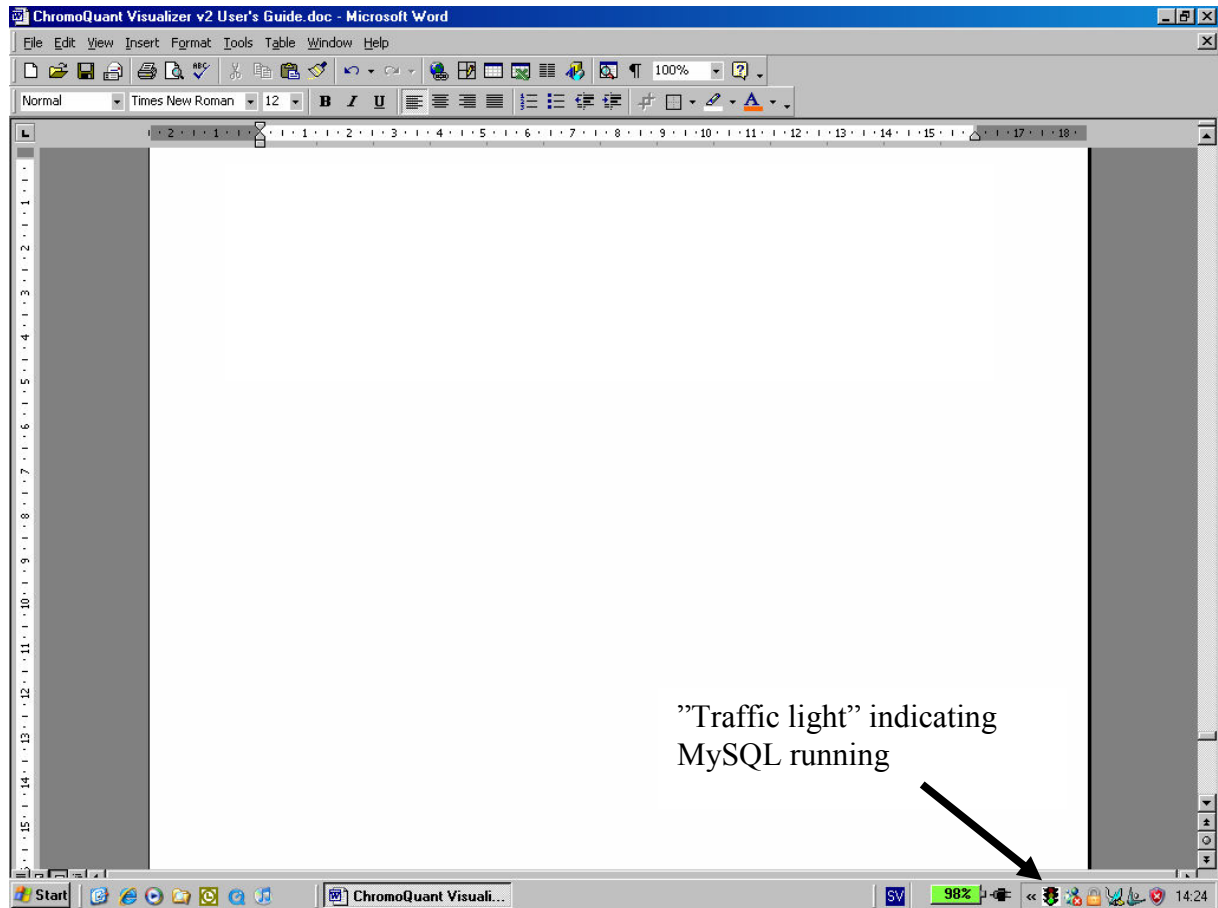
After the installation has successfully completed you will be asked to click *Finish* to close the installation wizard.



## Visualizer v2.2 Installation Guide

### 2.2 Checking the MySQL services

When MySQL services are running you will be able to see a small “traffic light” icon on your task bar. A green light indicates that MySQL is operating normally.

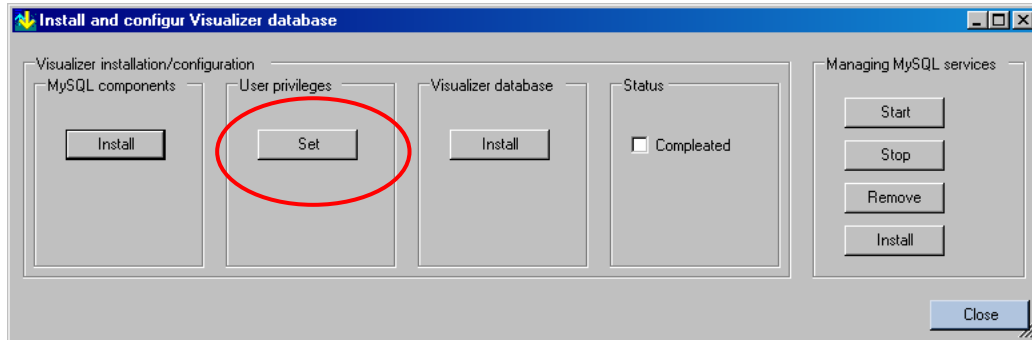




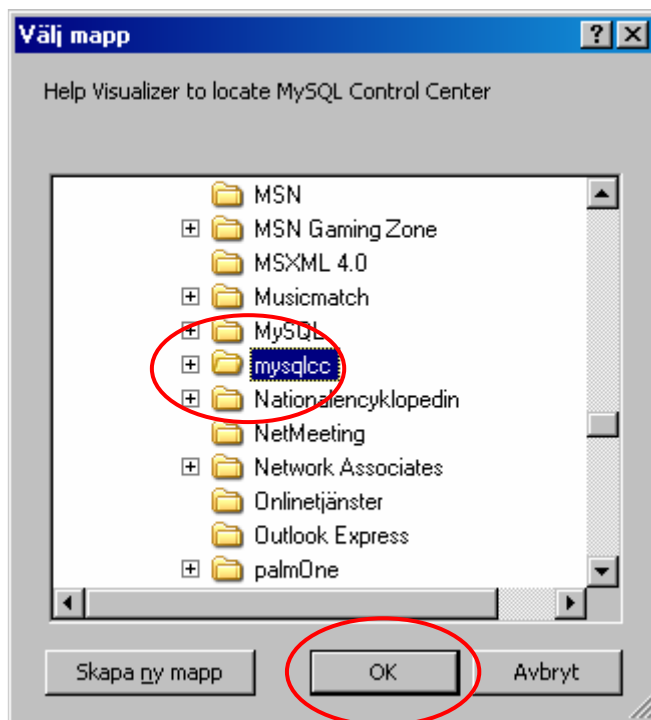
## Visualizer v2.2 Installation Guide

### 2.3 Set user privileges

Click the *Set* button in the User privileges section. This will open up MySQL Control Center where you can set appropriate privileges.



First you have to provide MySQL Control Center's installation directory named *mysqlcc*. Visualizer will attempt to find the correct directory. Click on the directory and then the OK button.



Thereafter MySQL Control Center will start. Depending on your computer's configuration you might be prompted to login in order to proceed. Give the following user-id and password:

User-id: *root*

Password: *[leave blank]*

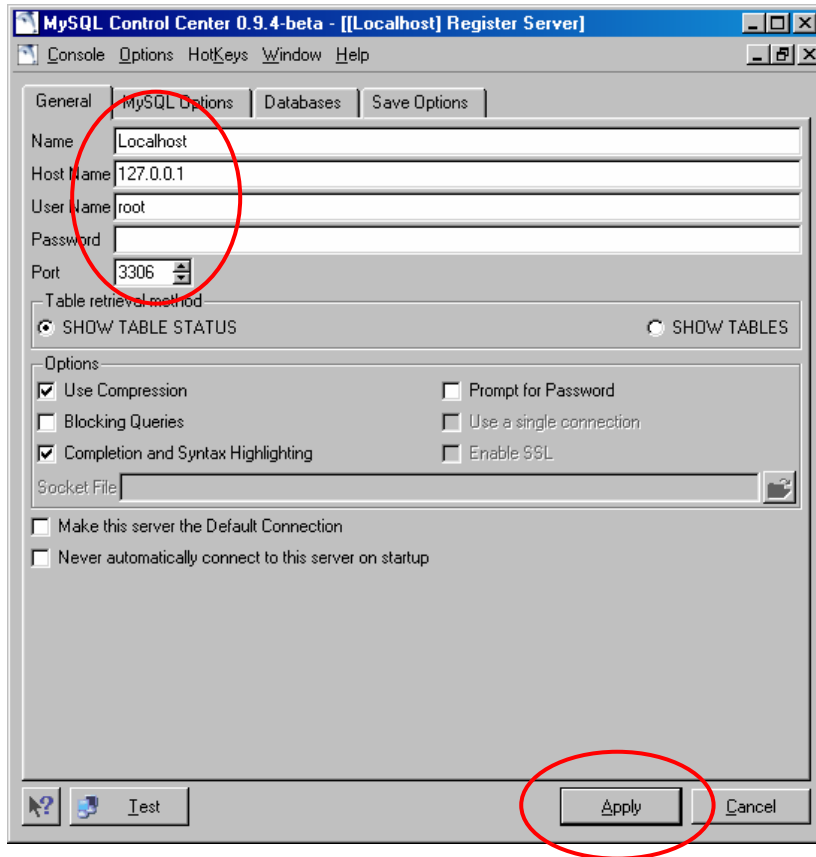
Following this you might have to add a new connection. In order to do this provide the following details (note that you leave Password intentionally blank):

Q07-136-e02

[www.cybergene.se](http://www.cybergene.se)

14/20

Valid 2008-11-25

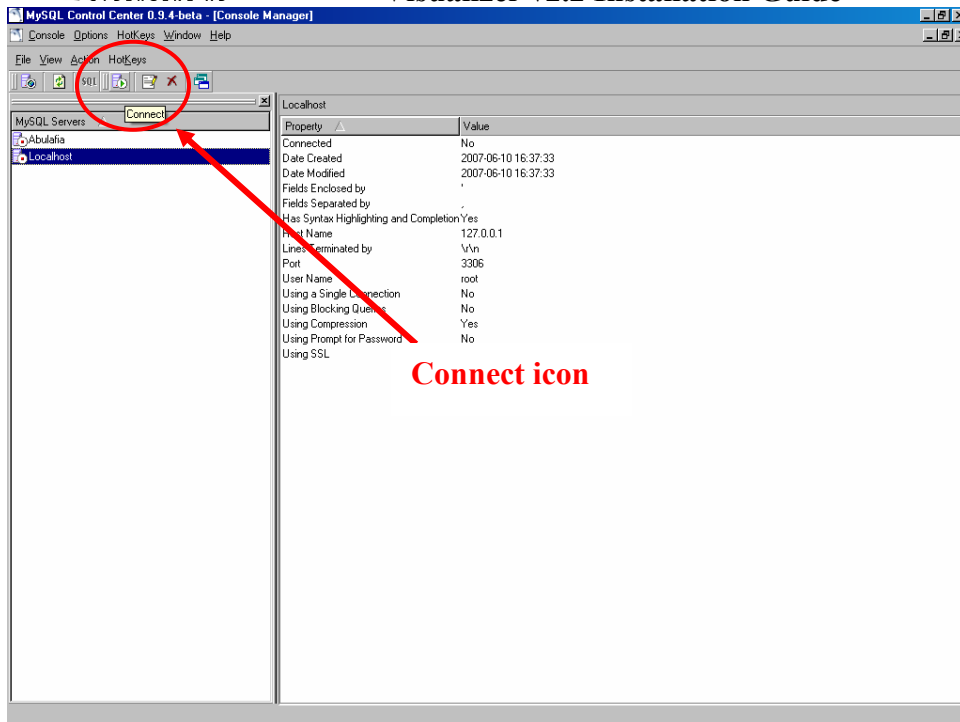


Following this you have to activate the connection you just created. Select *Localhost* and click on the connect icon (see figure below).

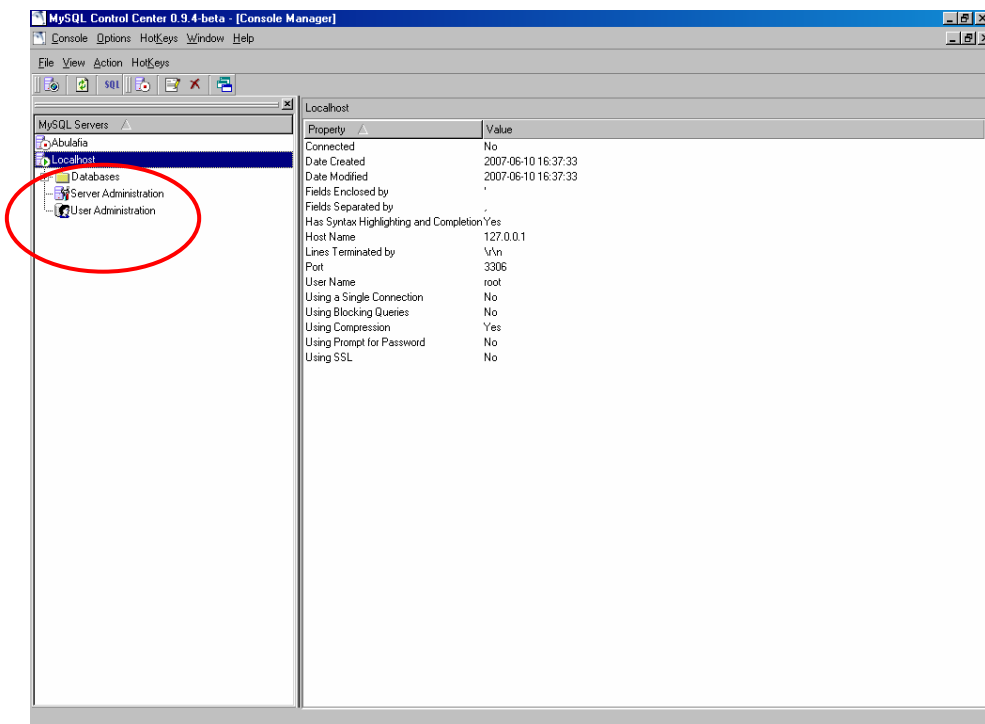


CYBERGENE AB

## Visualizer v2.2 Installation Guide



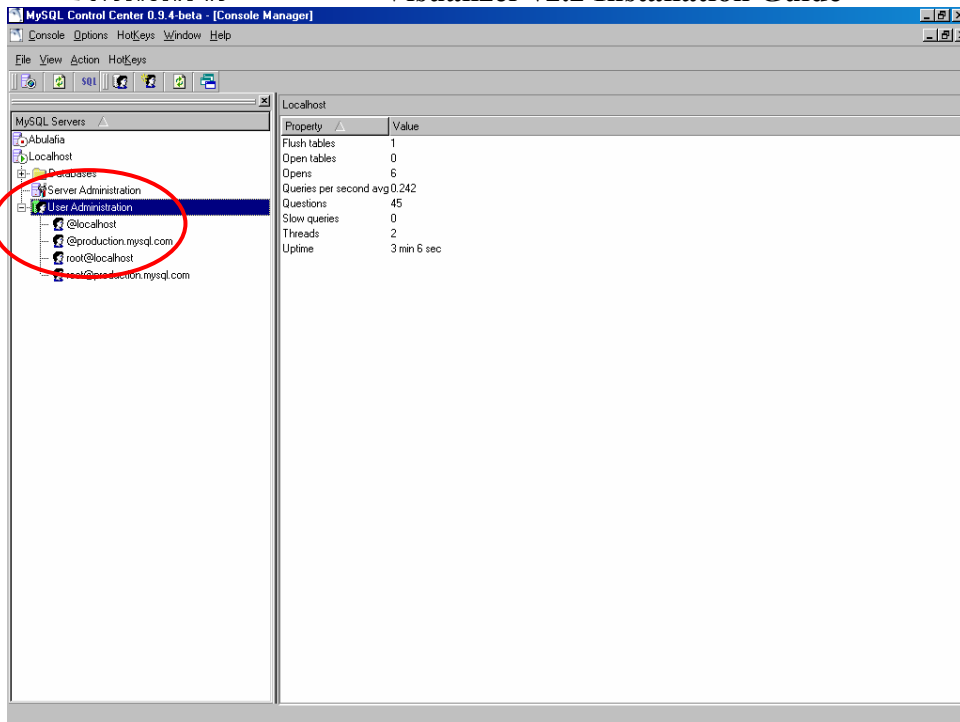
The *Localhost* icon will change colour to green indicating that MySql is connected.



Select *User Administration* under *Localhost*. You must double click to get the list of users.

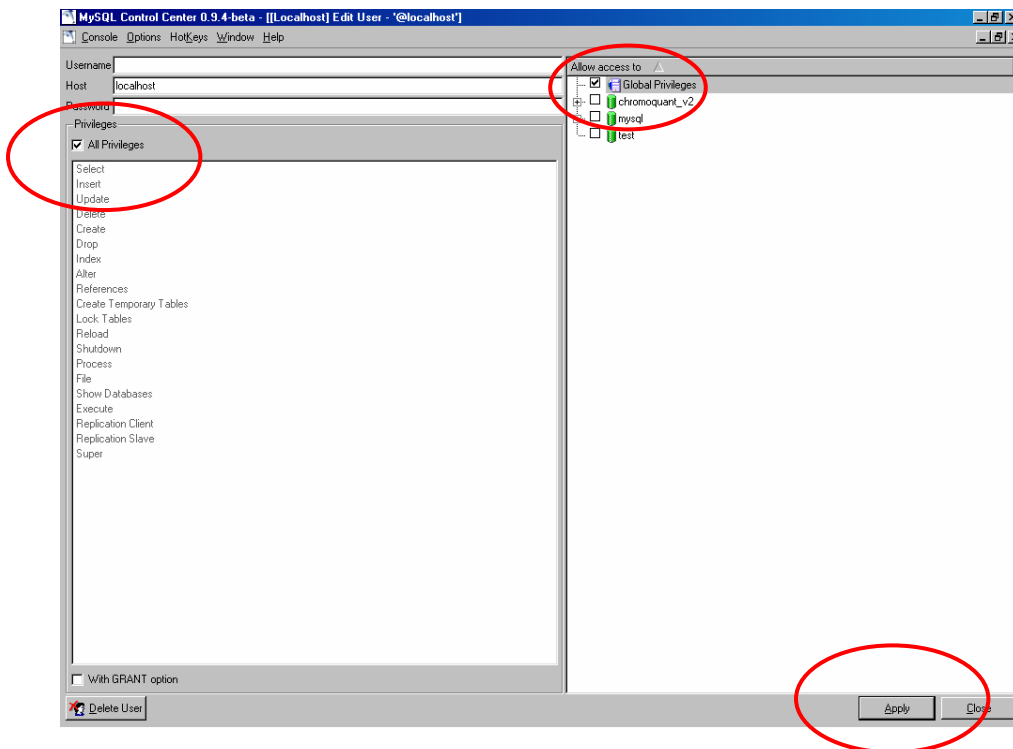


## Visualizer v2.2 Installation Guide



Select user *@localhost* and double click on this user. This will allow you to set the user's privileges.

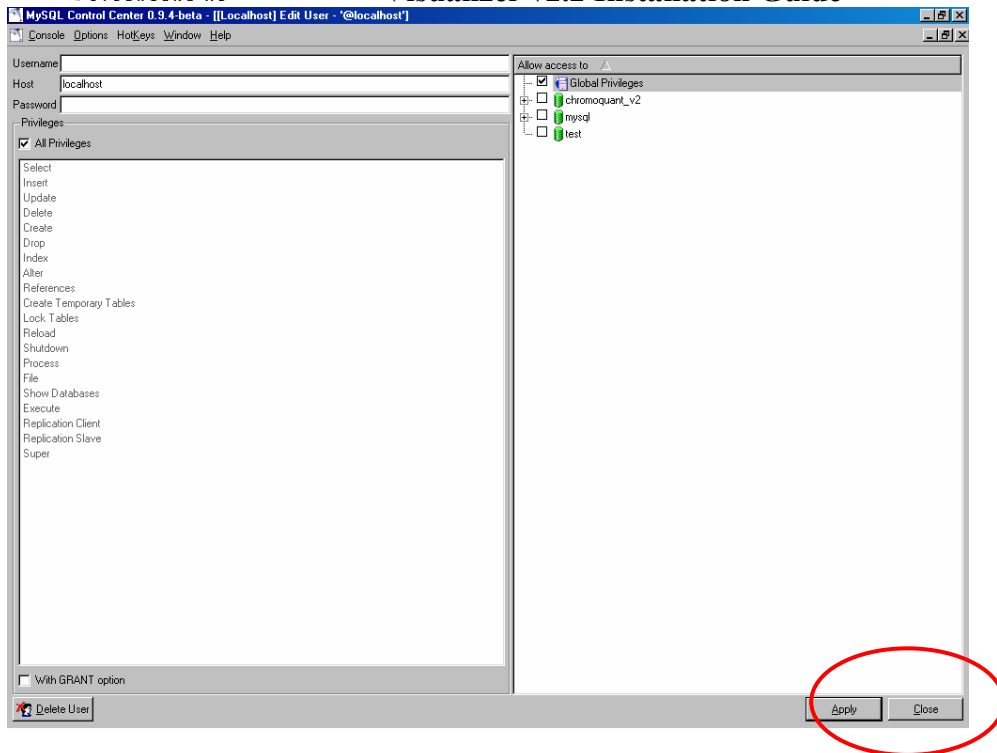
Check *Global Privileges* and *All Privileges*. Then click the *Apply* button in the lower right-hand corner, after that you can click the *Close* button.



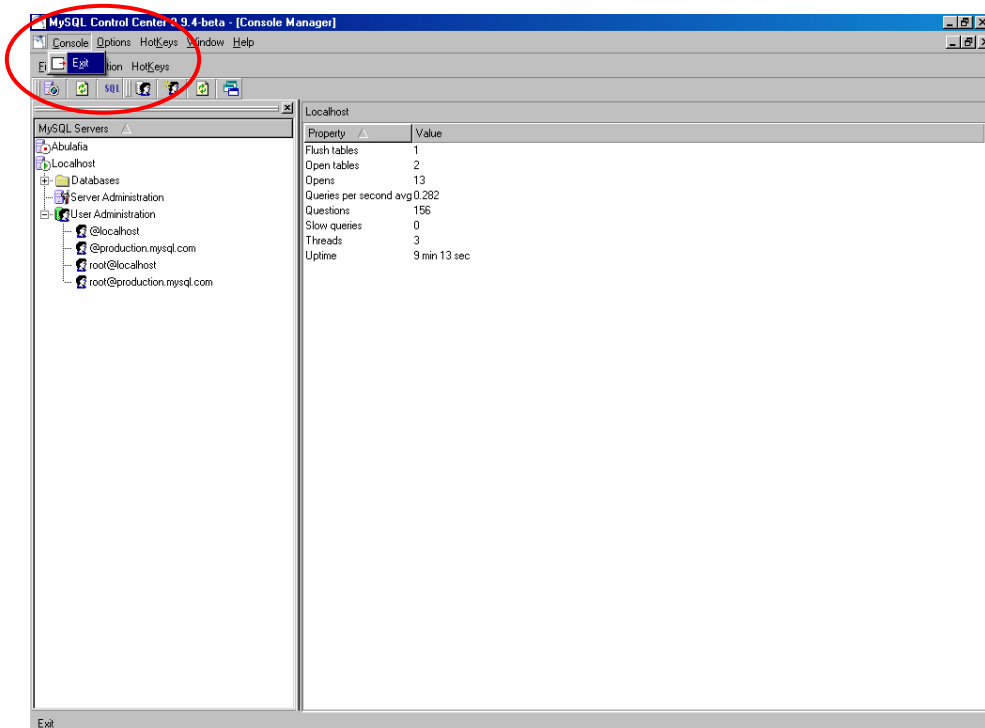


CYBERGENE AB

## Visualizer v2.2 Installation Guide



Select *Exit* from the Console menu, this will close the Control Centre.

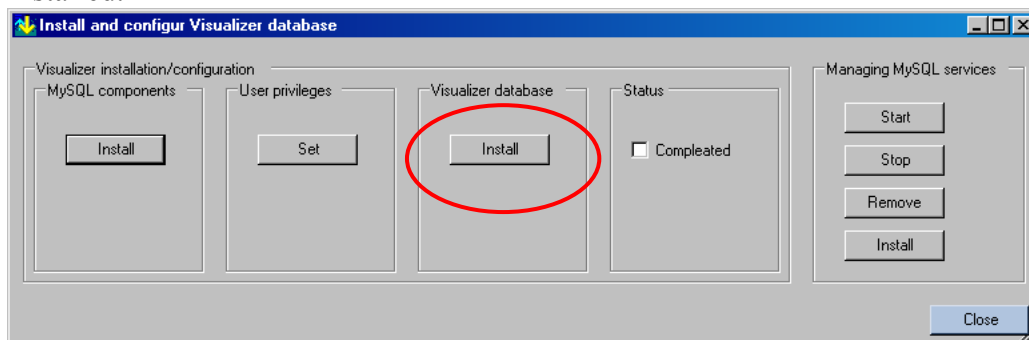




## Visualizer v2.2 Installation Guide

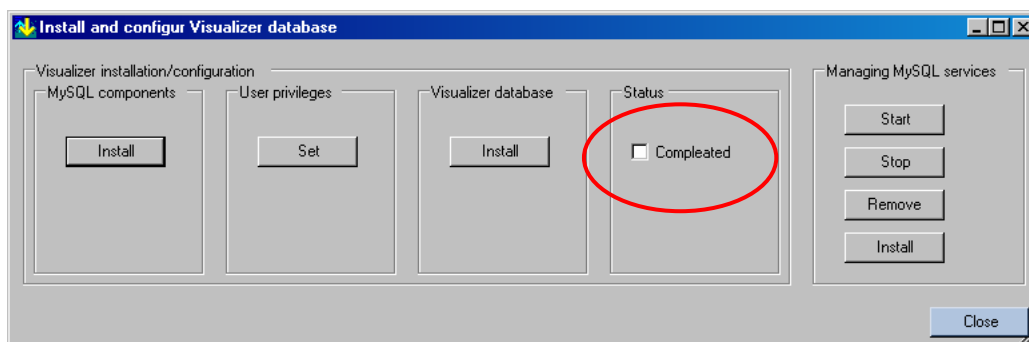
### 2.4 Install Visualizer's database

Click the *Install* button in the Visualizer database section. This action will populate Visualizer's database. A command window will open up briefly whilst the database is installed.



### 2.5 Indicate that Visualizer is configured

The final step is to check the *Completed* checkbox in the Status section. This actions control if Visualizer starts up in configuration or in normal mode. We recommend that you restart Visualizer after the configuration. If you for some reason need to redo some parts of the configuration then you can reach the configuration from the MySQL tab in the *settings* window.



Click the *Close* button to complete Visualizer's configuration.

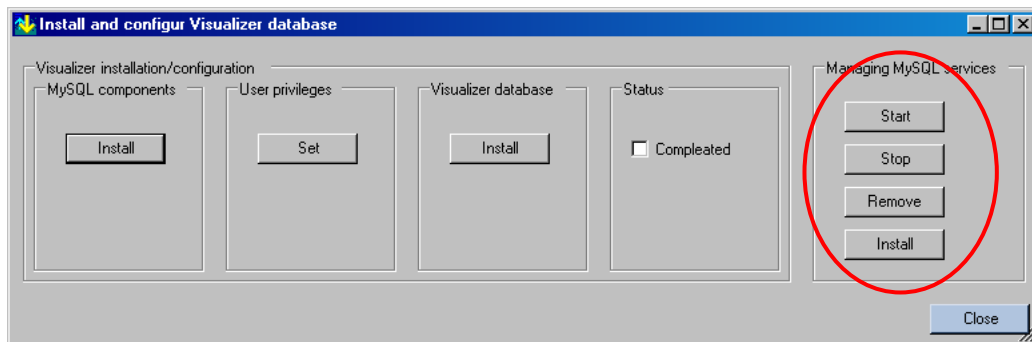
After you have completed these steps you need to close Visualizer and restart it. Visualizer is now configured and you can proceed using it to analyze your ChromoQuant samples.



### 3 Troubleshooting and manual installation of MySQL components

Manual installation is normally not necessary to perform. All MySQL components can be found in the “Redistribution” directory located in Visualizers installation directory. Each MySQL component has its own dedicated directory.

Sometimes there can be problems with the MySQL services, especially if a previous MySQL installation has been removed. You can use Visualizer configuration panel to help you start/stop the MySQL service and/or to remove/install it.



On strategy, when MySQL’s services do not start up properly, can be to first *stop* the service and thereafter *removing* it. This is then followed by an *installation* and *start* of the new service. You can also use MySQL’s various command line interfaces. However this requires very good computer skills.

To get support with troubleshooting contact CyberGene’s support at [chromoquant@cybergene.se](mailto:chromoquant@cybergene.se)